

ADVISORY COMMITTEE KICK OFF

OCTOBER 26, 2021



Agenda



Welcome & Introductions



Study Scope, Goals & Approach



Partnering & Coordination



Key Corridor Findings



Breakout Discussions



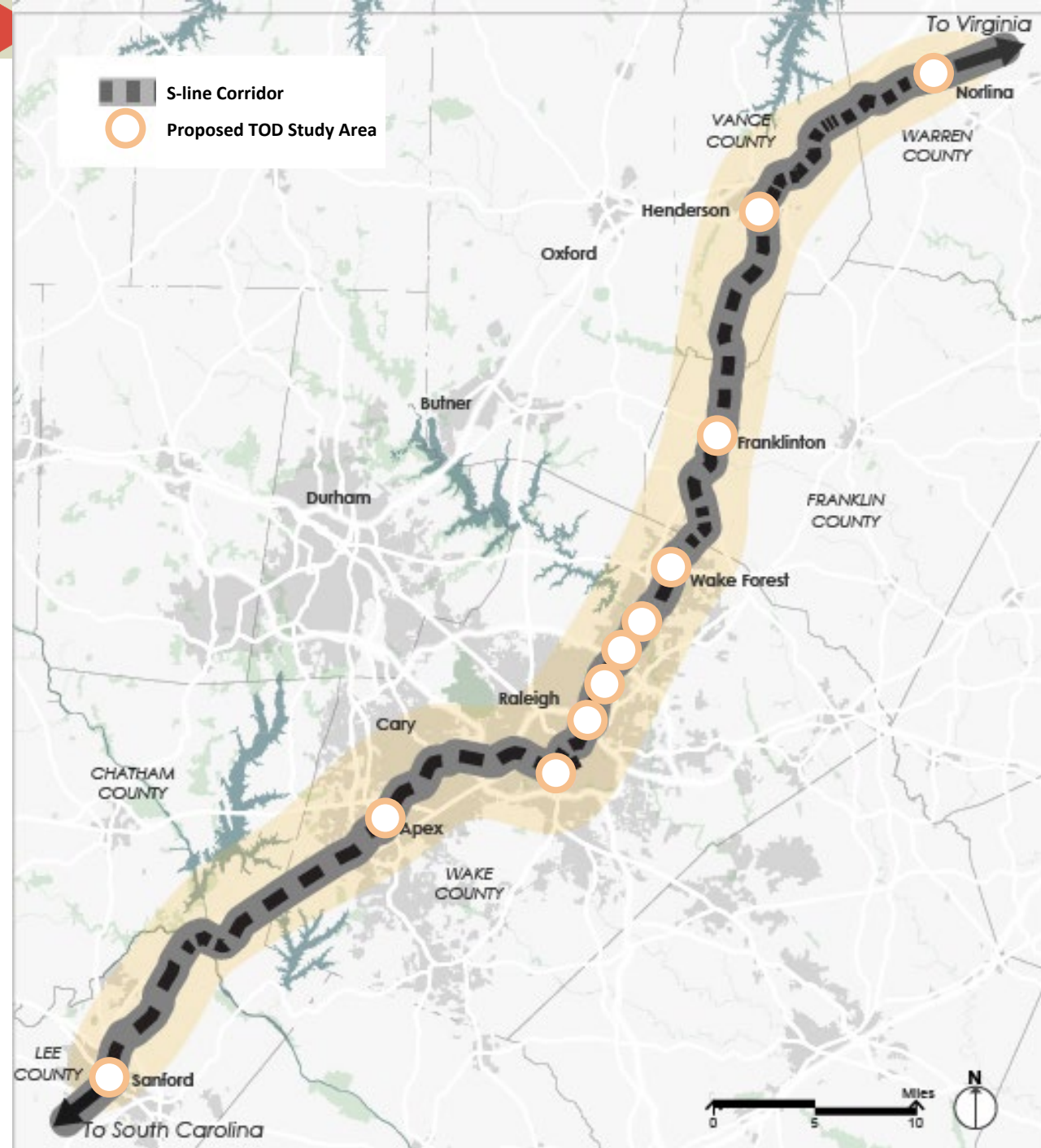
Branding Poll



Recent Activities & Next Steps



Open Discussion



Team Introductions & Our Partners

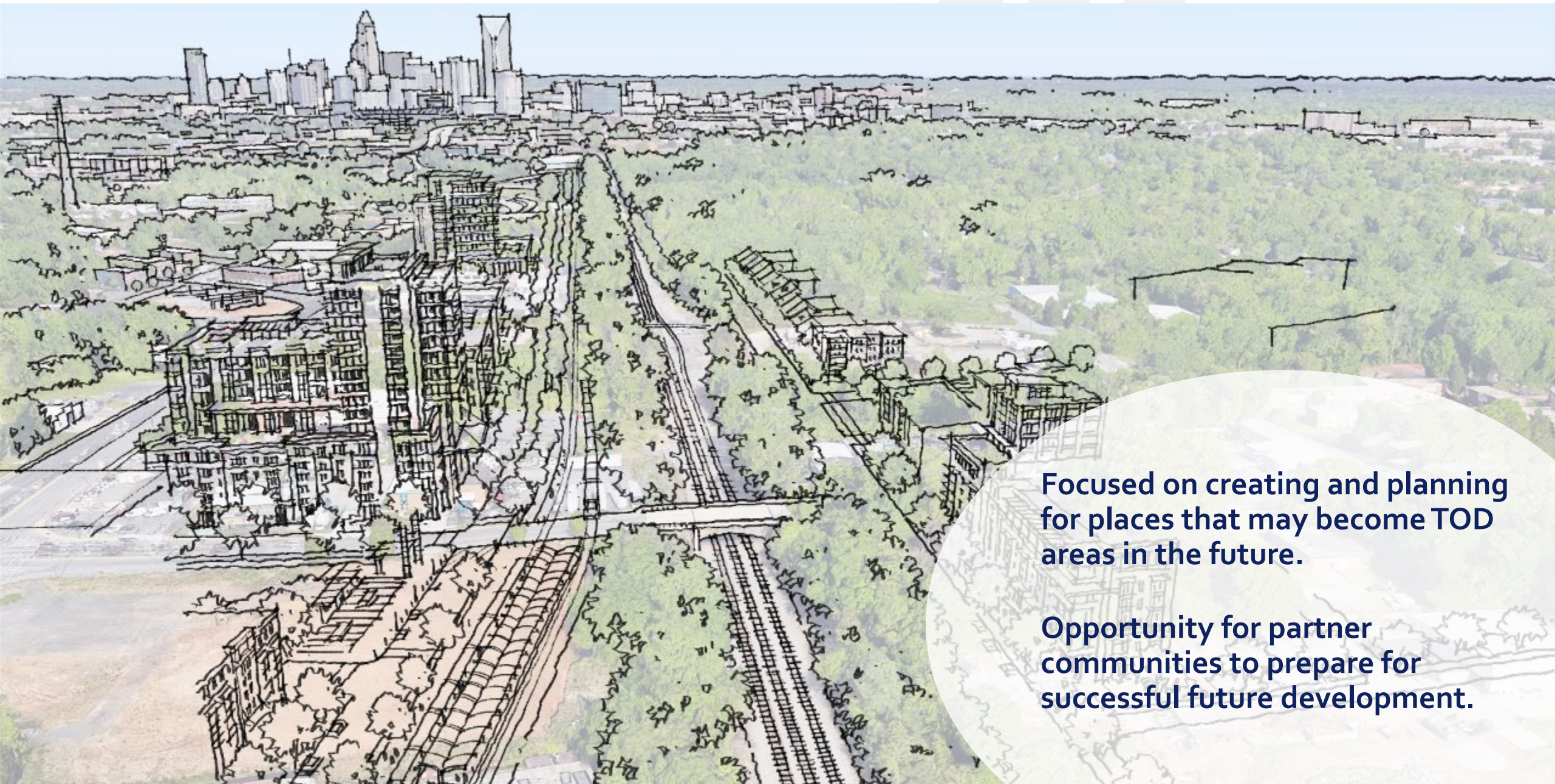


S-Line Project Overview

- Critical missing network link
- Intercity, freight and regional rail opportunities
- FY 20 CRISI grant update
- FY 21 CRISI grant application
- Future funding opportunities



TOD Study Purpose



Focused on creating and planning for places that may become TOD areas in the future.

Opportunity for partner communities to prepare for successful future development.

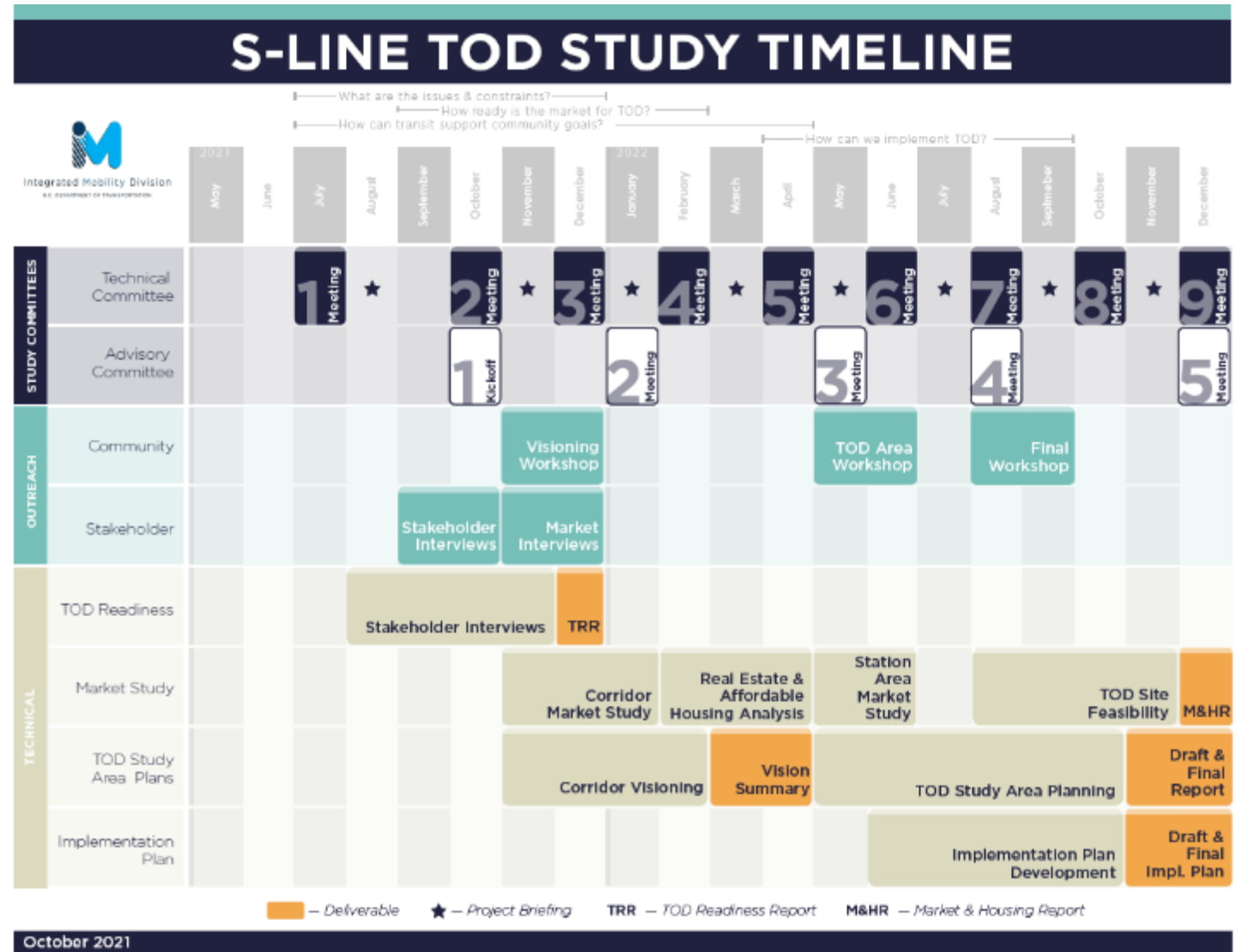
Study Goals

- Understand the possibilities
- Plan the “place” around transit
- Proactively plan context-driven TOD
- Corridor-wide Conversation
 - Funding / financing
 - Transit operations
- Local Implementation
 - Land use plans & zoning
 - Regulatory Policies
 - Infrastructure investments



Deliverables

- TOD Readiness Report
- Corridor & Study Area Market Assessment
- Vision Summary
- Study Area Plans
- Implementation Plan



Community Engagement

- Stakeholder Engagement
- Public Workshops
- Municipal Working Group Meetings
- Market Study Interviews



How will we Collaborate?



How will we Collaborate?

INFORMATION

Advisory Committee

Leadership from:

NCDOT, Wake County, Warren County, City of Sanford, Town of Apex, City of Raleigh, Town of Wake Forest, City of Henderson, Town of Franklinton, Franklin County

Technical Committee

Technical Staff from:

NCDOT, Wake County, Warren County, City of Sanford, Town of Apex, City of Raleigh, Town of Wake Forest, City of Henderson, Town of Franklinton, Franklin County

Other Stakeholders

Representation from:

Transit Agencies, COGs, MPOs, RPOs, Chambers of Commerce, Other Towns, Cities, Counties, Key Community Groups, Major Employers, Non-Profits, etc.



Integrated Mobility Division
SOUTH EASTERN REGIONAL COUNCIL

What is the commitment?

	Role	Commitment
Advisory Committee	<ul style="list-style-type: none">• Adopt recommendations from Technical Committee• Champions of the study• “Energy creators”	<ul style="list-style-type: none">• Quarterly Meetings or at Key Milestones• Guides overall study direction
Technical Committee	<ul style="list-style-type: none">• Peer exchange, learning & knowledge-sharing• Works with study team to incorporate community input• Provides technical input on corridor-wide issues	<ul style="list-style-type: none">• Working Meetings every 2 months• Facilitates/hosts local events/community engagements• Reviews all Major Study Deliverables
Other Stakeholders	<ul style="list-style-type: none">• Provides input for Technical Committee to evaluate• Liaison between study team and stakeholder group/organizations	<ul style="list-style-type: none">• Meet as-needed• Engage as sub-groups



Corridor Overview: Growth & Change

2000 Population

2010 Population

2019 Population

2019 Jobs

1 Dot = 50 People

1 Dot = 50 Jobs

40% of people who live within the study corridor*, also work within the study corridor.

860K residents within the study corridor. (That's 310,000 new residents since 2000.)

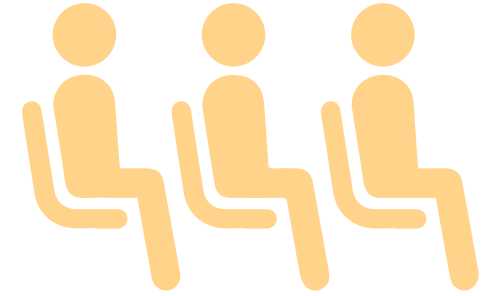
440K jobs within the study corridor

American Community Survey Population Estimates (2019); U.S. Census
* within 5-mile buffer of S-Line study corridor



Integrated Mobility Division
BUREAU OF TRANSPORTATION

Corridor Overview: Where People Work & Live



34% Residents in the study corridor live 25+ miles from work

10,600 People who live in the study corridor, work within 1/2 mile of a TOD study area

23% Of those residents make less than \$1,250/month

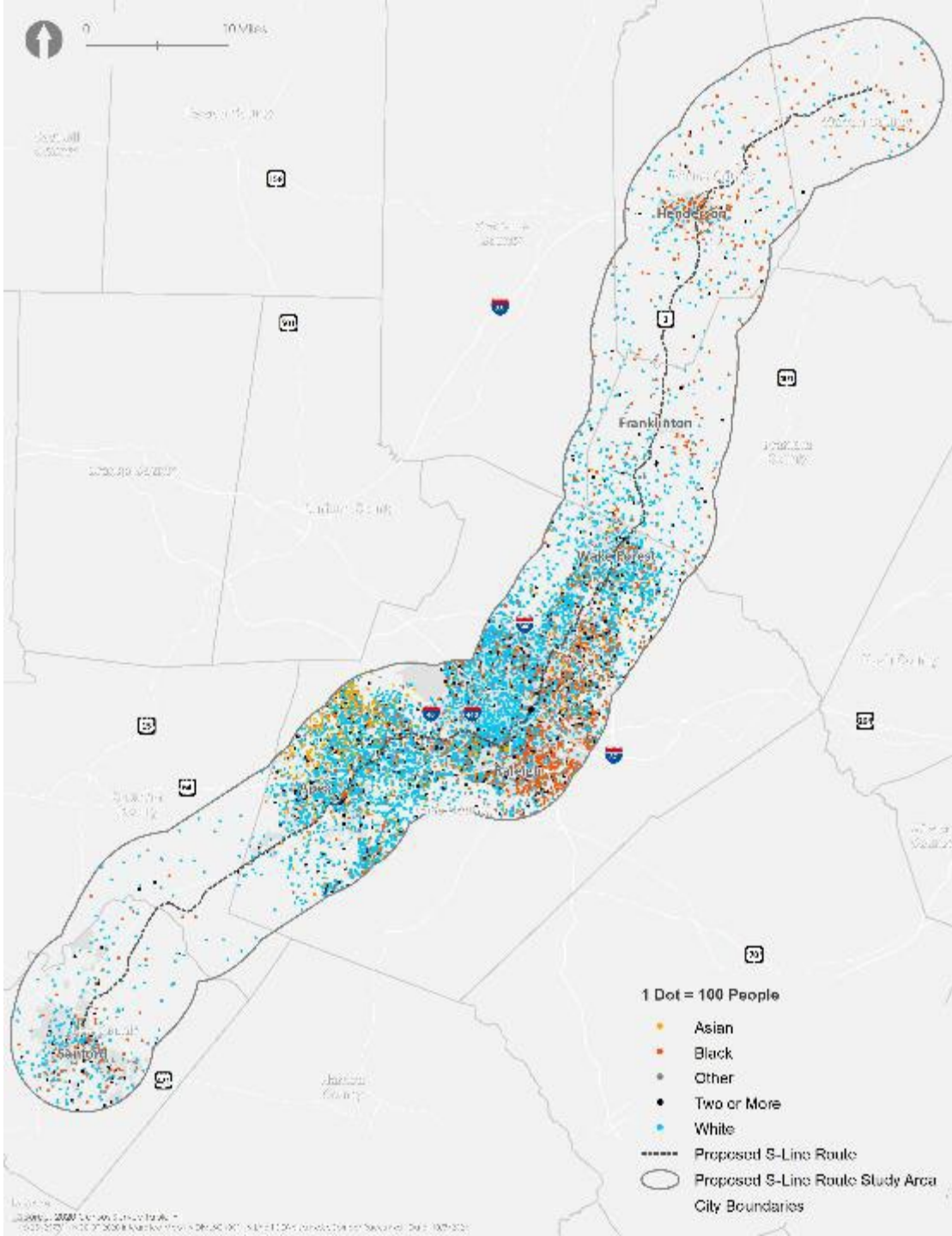


Corridor Overview: Equity & Demographics

42% Minority

14% 65-years & older

14% Low-income households



Breakout Exercise

1. Breakout into groups
2. Discuss your thoughts/ideas on the below questions:

Question 1: What does TOD mean to your community?

Question 2: We have a series of engagement events with the general public coming up in December. What are the top 3 things you want to learn from your community related to the S-Line and transit-oriented development?

3. Write down 1 word to describe the future of TOD in your community
4. Select one picture in your pack of postcards that best represents your community
5. Report Back



Report Back



Completed & On-Going Activities

- [illegible]

What is your favorite place (attraction, restaurant, or business) in any of the S-Line Communities?



Ongoing Activities

S-LINE TOD STUDY BRIEFING

August 2021

Description & Purpose

The NCDOT Integrated Mobility Division is leading an Transit-Oriented (TOD) visioning initiative for seven communities on a 95-mile-long section of the S-Line. The rail corridor is being considered for passenger rail service, and this study will evaluate Transit-Oriented Development (TOD) opportunities around potential stations in Sanford, Apex, Raleigh, Wake Forest, Franklinton, Henderson, and Norlina.

The S-Line TOD Study will begin a community conversation about passenger rail across the corridor and evaluate market conditions, affordable housing considerations, multi-modal transportation opportunities, and regulatory conditions in the various jurisdictions. Opportunities will be identified to get ready for transit in a way that is responsive to the communities needs and local contexts.

Past and Ongoing Activities

- Held the first Technical Committee Meeting on June 17th
- Finalized the Technical Committee and Advisory Committee members
- Developing a final list of stakeholders
- Scheduling stakeholder interviews for the Fall
- Rescheduling the Advisory Committee kickoff meeting due to changing COVID regulations. It was previously scheduled for August 23rd.



Schedule



Summary of Key Study Tasks

- 1. Community Engagement**
 - Engage stakeholders
 - Conduct public workshops
 - Conduct municipal work group meetings
 - Conduct market study interviews
- 2. TOD Readiness Report**
 - Analyze current land use conditions, policy and regulatory conditions, socio-economic conditions, and multi-modal transportation network
 - Evaluate freight rail, environmental and historic resources
- 3. Market Assessment**
 - Evaluate corridor wide market conditions
 - Analyze station area real estate
 - Assess affordable housing
- 4. Vision Summary**
 - Confirm potential station locations
 - Create corridor vision and urban design guidelines
 - Develop station area plans
 - Develop visualizations and branding
- 5. Implementation Plan**
 - Develop draft regulatory tools
 - Identify infrastructure financing strategies & funding sources
 - Identify public-private partnership opportunities

WHO'S INVOLVED?

Our Collaboration Framework



	Membership	Role
Advisory Committee	<ul style="list-style-type: none"> • Leadership from study's funding partners • Community Leaders 	<ul style="list-style-type: none"> • Adopt recommendations from Technical Committee • Champions of the study • "Energy creators"
Technical Committee	<ul style="list-style-type: none"> • Technical & planning staff from study's funding partners 	<ul style="list-style-type: none"> • Peer exchange, learning & knowledge-sharing • Works with study team to incorporate community input • Provides technical input on corridor-wide issues
Other Stakeholders	<ul style="list-style-type: none"> • Regional agencies • Local agencies • Non-profit organizations 	<ul style="list-style-type: none"> • Provides input for Technical Committee to evaluate • Liaison between study team and stakeholder group/organizations

For more information, contact:

- **Email:** SLineTODstudy@kittelson.com
- **Study MS Teams Channel:** <https://tinyurl.com/SLineStudy>



Which logo makes you think of the S-Line?



Respond at pollev.com/planningcommunities135

Text **PLANNINGCOMMUNITIES135** to **22333** once to join, then **A, B, C, D, or E**

Which logo do you prefer?

A

B

C

D

E

Powered by  **Poll Everywhere**

Start the presentation to see live content. For screen share software, share the entire screen. Get help at pollev.com/app

Next Steps



- Stakeholder Interviews
- Visioning Workshop
- Next Technical Committee Meeting
- Next Advisory Committee Meeting



October



December



December



January (2022)

How to Stay Engaged

- Bi-Monthly Project Briefing
- Reach out! Let us know if you have meetings or briefings we should know about



Open Discussion

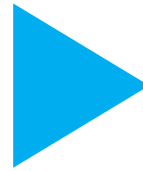
Questions,
Comments or
Feedback?



Project Contacts

Ryan Brumfield

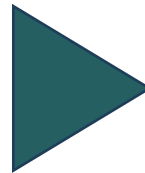
rmbrumfield@ncdot.gov



Integrated Mobility Division
N.C. DEPARTMENT OF TRANSPORTATION

Candice Andre

candre@vhb.com



Caitlin Tobin

ctobin@kittelerson.com

SlineTODstudy@kittelerson.com

